

# **SALSA®**

Therapy chairs for  
hospitals and  
medical practices



**LIKAMED®**



## Index

4 – 5	<b>SALSA®</b>
6 – 7	<b>SALSA® A1</b>
8 – 11	<b>SALSA® A3/A4</b>
12 – 15	<b>Comfort</b>
16	<b>Hygiene and cleaning</b>
17	<b>Accessories</b>
18	<b>Technical Data</b>
20	<b>Additional products</b>
21 – 23	<b>LiKAMED</b>

# SALSA®

## Therapy chairs

- Versatile and economical
- Designed for the comfort and safety of patients
- Safe working load 200 kg

Ideal for and designed for

- Daycare and outpatient clinics
- General medical practices
- Dialysis
- Oncology
- Blood and plasma donation
- Infusion and transfusion therapy
- Recovery rooms
- ENT and ophthalmology clinics
- Care homes and much more



[tuv-sud.com/ps-cert](http://tuv-sud.com/ps-cert)

SALSA®

## Compact chairs for hospitals and medical practices

SALSA chairs are economical and suitable for virtually any form of treatment with their focus on a high degree of comfort and ease of operation combined with mobility and stability, even for very heavy patients.

Both nurses and patients like the compact design and ease of movement of all SALSA chairs. You can select different options and practical accessories to customise the chair precisely to your requirements.







**Flexibility with seat position, comfort and shock position**

Stepless motorized adjustment of the reclining surface.



# SALSA® A1

## Compact and functional

The basic SALSA model offers economical high-performance comfort, particularly with the infinitely adjustable position of the seat from the seated position to the comfort position through to the shock position. The required position is easily set with the intuitively designed buttons of the hand switch. Patient comfort, ergonomics and safety are also priorities with the easily cleaned, soft full-foam armrests, which can be rotated and tilted for ease of access and positioning.

### Functional equipment



#### Rotatable and folding upwards full foam armrest pads

The folding armrests make it easier for patients to take their position. The rotatable function provides increased comfort while seated or lying down and also ideal positioning of the arm for treatment. The grey, full-foamed armrests are soft, noted for their long-lived and ease of cleaning.



#### Universal upholstery

The two-layer sandwich foam is ideal for universal applications with many different patients.

### Hand switch

For stepless motorized adjustment of the reclining surface. With manual locking function and fastening clip on the back.



#### Casters Ø 7.5 cm with individual lock

The low access height simplifies entry and exit for the patient and assistance by the nursing personnel. The individual lock on all four casters keeps it stationary.



EU power plug





# SALSA® A3/A4

## Modern therapy chairs for demanding environments

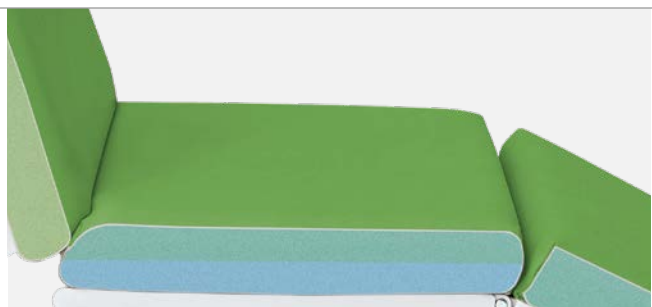
The SALSA A3 moves your patients on the soft comfortable upholstery into the required position. Three motors move the chair from the seated position to the comfort position and bed position: comfortable for patients to relax during treatments that may take several hours. And in case of emergency at the touch of a button moves the chair into the shock position and if necessary further to the Trendelenburg position.

The SALSA A4 is the premium model and meets the patient when getting on the chair with its stepless motorized height adjustment, making it easy for both patient and nurses. SALSA chairs are light and stable for loads up to 200 kg, making them the standard for comfort and safety in this class of chairs.



### Rotatable and folding upwards full foam armrest pads

The folding armrests make it easier for patients to take their position. The rotatable function provides increased comfort while seated or lying down and also ideal positioning of the arm for treatment. The grey, full-foamed armrests are soft, noted for their long-lived and ease of cleaning.



### Universal upholstery

The two-layer sandwich foam is ideal for universal applications with many different patients.



### Casters Ø 7.5 cm with individual lock

The low access height simplifies entry and exit for the patient and assistance by the nursing personnel. The individual lock on all four casters keeps it stationary.



EU power plug

# Stay flexible

## Adjustment and positioning options

Set the chair to any desired position. Configured to meet your precise requirements, the SALSA A3 comes with three motors or you can select the SALSA A4 with four motors for the additional height adjustment.



## Individual flexibility with seat position, comfort and bed position

Stepless adjustable positioning of back part, seat part and foot part with three separate drives.



## Additional option with height adjustment

Particularly for older patients it is extremely important to be able to get on or off the chair easily, which is why the additional motor on the SALSA A4 for stepless adjustment of the height is so important. This also allows the chair to be moved into a specific working position, which is a great benefit for the nursing personnel.



# Ease of operation

All adjustments are easily made quickly and precisely with the intuitively designed hand switch. The symbols on the buttons are three-dimensional for operation by visually impaired people. You receive the suitable hand switch for the specific model with only the functions that you have selected.

## Comfort buttons

One of the most popular functions of LiKAMED chairs: after setting the optimal seat position, the patient can change the position quickly and easily with only one pair of buttons without changing the angles of the seat part, back part and foot part to one another.

## Special buttons

The coloured markings ensure that the most important functions are easily visible. Quick adjustment to the Trendelenburg position with the red button is particularly important in case of emergency.

## Magnetic key

The hand switch can be locked and unlocked with the magnetic key.



## Emergency position

Move your patient directly to the shock position or further to the Trendelenburg position with the emergency button.

Shock position



Trendelenburg position



# Greater comfort for your patients



## Soft upholstery

The optional soft cushions of the upholstery has a particularly soft-top layer (optional for SALSA A3/A4).<sup>1</sup>

<sup>1</sup> not suitable for medical environments except for dialysis and oncology.



## Robust upholstery

The PU foam is particularly suitable for heavier patients.



## Upholstery wedge

Between seat part and back part (optional for SALSA A3/A4).

## Relaxation is also in the head

A relax pillow or a neck roll is recommended for optimal comfort in the chair.



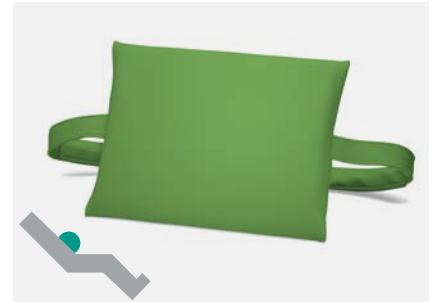
## Relax pillow

in the upholstery colour for a relaxed head position.



## Neck roll

for relaxation in the neck region. In the upholstery colour.



## Lumbar support

The flexible cushion with comfortable gel insert matches the colour of the upholstery; it promotes natural curve of the spine in a seated position and may prevent backache.

## Colours for every environment

Standard colours for upholstery, foam armrests, relax pillow, neck roll, upholstery wedge, footrest inlay and lumbar support.



stone



saffron



kiwi



agave



azure



sapphire

The imitation leather of the upholstery covers has a pleasing surface and has a particularly long life. The upholstery is dirt-resistant, resistant to scratching and tears and resistant to disinfectants.

# Relaxed seating comfort



## Footrest

The footrest provides a really relaxed seat position. A footrest is recommended for specific applications, such as dialysis, in order to give patients the option of pressing their feet against the footrest to relieve a cramp.



**Manually adjustable footrest**  
with standard grey plastic footrest inlay.

## Padded imitation leather footrest inlay

In addition to the standard grey, a padded version with easy-care imitation leather cover is available for greater comfort and in colours to match your general colour scheme.







# For every application the perfect solution

## Armrests

For every specialty the perfect solution: armrests that rotate and can be folded upwards, armrests that tiltable or armrests with additional tilt adjustment.



### Rotatable and folding upwards armrests

The armrests can be folded up to make it easier for patients to take their position and the rotating function offers additional comfort while seated or lying down.



### Additional tiltable armrests

Increased comfort even during long treatment sessions due to extended adjustment options. For placing the arm in the ideal position for treatment.



### Armrests with additional tilt adjustment

Best possible adjustment of position in all seated and lying positions. Greater comfort and flexibility for your patients.

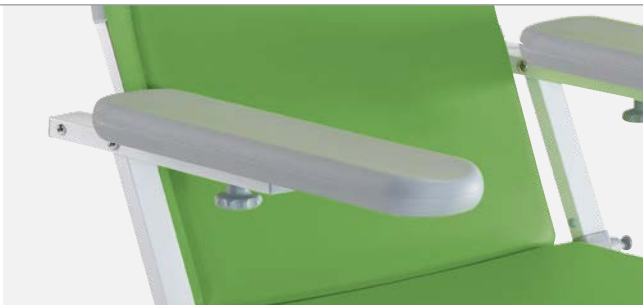
## Armrest pads

The range of different pads for armrests makes it easy to make the right choice for your purpose.

The full foam armrest pads are comfortable and particularly easy to clean. The range of optional foamed armrest pads with imitation leather covers is particularly comfort. Arms are comfortably supported by the slightly concave shape and the integrated holder gives the hand switch its specific place and it is easily accessible.

### Side rail

The removable side rail, available for all armrest pads, prevents the arm from slipping off the armrest.



### Full foam armrest pads

The grey, full-foamed armrest pads are soft, noted for their long-lived and ease of cleaning.



### Foam armrest pads

The optional straight armrest pads with a holder for the hand switch are particularly comfortable with the soft padding material.



### Low wedge-shaped foam armrest pads

The ideal option if you want an armrest position with a slight inclination downwards for greater comfort.



### High wedge-shaped foam armrest pads

This optional type improves comfort during treatment with a strong inclination downwards, even with non tiltable armrests.

# Easy to clean and hygienic

## Upholstery protection

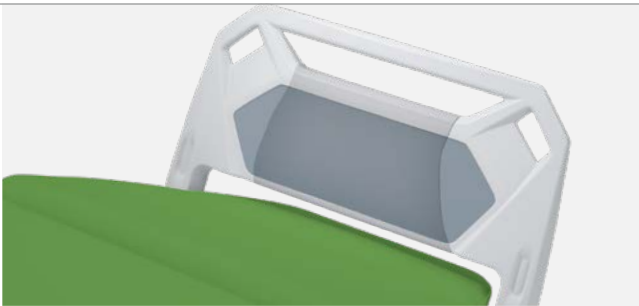
The robust and easily cleaned transparent protective covers protect your chair, even under heavy use with shoes, but they are still very easy to clean. The hand switch holder on the armrests remains accessible with all protective covers.



Transparent protective cover for the foot part



Transparent protective covers for full foam and foam armrest pads



Transparent protective cover for the footrest

## Paper roll holder

Hygiene and cleanliness for every patient by changing the paper cover. The permanently installed roll holder keeps the paper roll ready for use and perfectly positions the paper cover.



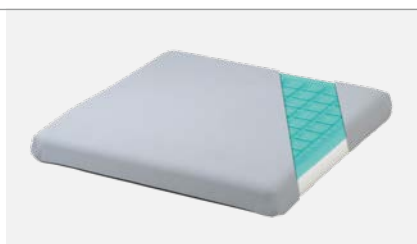
# For every application the optimal accessory

## Additional accessories and options for SALSA® therapy chairs



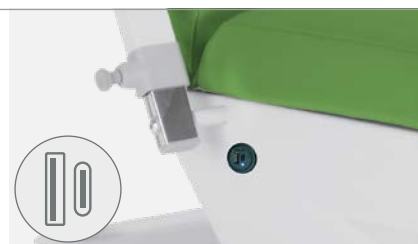
### Casters Ø 10 cm with individual lock

Easy to move around and comfortable with good shock absorption with 10 cm diameter casters.



### Pressure-relieving gel seat cushion

With grey PU-cover and comfortable gel insert. Perfect for long treatment sessions.



### USB charging port

2-port charging option for smartphone or tablet and connection for the USB reading lamp.



### USB reading lamp

The patient reading lamp for the USB charging port.



### Hand switch holder with velcro

Made of grey imitation leather and suitable for full-foam armrest pads. Makes it easier for the patient to grip the switch.



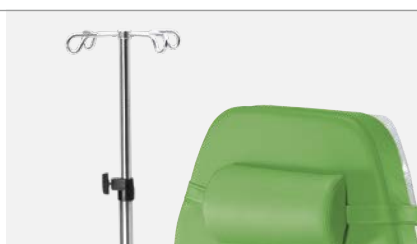
### Grey holder with velcro

Made of grey imitation leather and suitable for foam armrest pads. Fits for nurse call or other remotes.



### Infusion rod holder\*

For improved mobility by space-saving mounting swiveling infusion rod holder on the right and left of the chair.



### Infusion rod incl. bottle holder\*

The height adjustable accessory for the swiveling infusion rod holder.



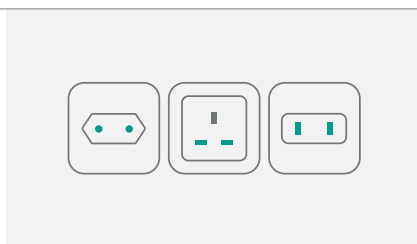
### Equipotential bonding cable

For the integrated equipotential bonding connection. Required for intracardiac procedures.



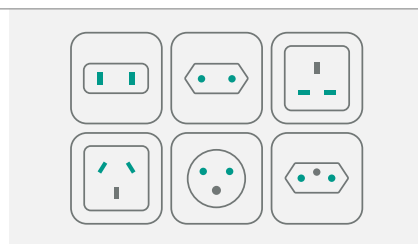
### Rechargeable battery\*

Use the chair adjustment options temporarily without a power outlet.



### Power plug types for SALSA A1

CH, GB, USA plug.  
Other power plugs on request.



### Power plug types for SALSA A3/A4

BRA, CH, CN, GB, ISR, USA plug.  
Other power plugs on request.

\*Option for SALSA A3/A4 only.

# Technical Specifications

## SALSA®

Technical data	SALSA A1	SALSA A3 / SALSA A4	
Armrests length x width x height			
Full foam armrest pads	60.5 cm x 13.5 cm x 4.5 cm		
Foam armrest pads	52.5 cm x 15.5 cm x 8.5 cm		
Low wedge-shaped foam armrest pads	52.5 cm x 15.5 cm x 6.5 to 9.5 cm		
High wedge-shaped foam armrest pads	52.5 cm x 16.5 cm x 7.5 to 12.5 cm		
Upholstery length x width x height	210 cm x 53.5 cm x 7 cm		
Upholstery material	UV-proof, impermeable to moisture, checked for biocompatibility and toxicity, flame retardant and has a particularly long life.		
Total length (max.) x total width (max.) with footrest	199.5 cm x 80.8 cm	229 cm x 80.8 cm	
Floor clearance	93 mm (casters Ø 7.5 cm)/121 mm (casters Ø 10.0 cm)		
Seat height			
without height lift	64 cm (casters Ø 7.5 cm)	63.5 cm (casters Ø 7.5 cm)	
	67 cm (casters Ø 10.0 cm)	66.5 cm (casters Ø 10.0 cm)	
with height lift		56.5 cm to 68 cm (casters Ø 7.5 cm)	
		59.5 cm to 71 cm (casters Ø 10.0 cm)	
Height adjustment	–	–	11.5 cm
Angle of inclination			
Back part shoulder area/lumbar area	84° to 38°/64° to 18°		86° to 6°/66° to -14°
Seat part/foot part	4° to 50°/-29° to 17°		2° to 17°/-30° to 21°
in shock position			
Back part shoulder area/lumbar area	38°/18°		20°/0°
Seat part/foot part	50°/17°		17°/21°
in Trendelenburg position			
Back part shoulder area/lumbar area	–		6°/-14°
Seat part/foot part	–		17°/ 21°
Casters			
Individually locking Ø 7.5 cm	●	●	
Individually locking Ø 10 cm	○	○	
Power adjustment			
Total reclining surface	●	–	–
Back part, seat part, foot part	–	●	●
Height adjustment	–	–	●
Equipotential bonding terminal	●		
Power rating, primary	100-240 V AC, 50/ 60 Hz		
Power rating, secondary	29 V		
Fuse	internal		
Protection type hand control unit/controller	IP 66/IP X4		
Protection class	II		
Duty cycle	2 min. ON/ 18 min. OFF or 10% with max. 5 switching cycles per minute		
Consumption in standby	< 2 W		
Electrical safety, EMC	DIN EN 60601-1, 60601-1-2		
Spiral power cable	2.0 m to 3.5 m		
Permitted air pressure	800 to 1060 hPa		
Ambient temperature	10° C to 40° C		
Emission sound pressure level	< 65 dB(A)		
Medical device class	I		
Application parts type	B (CF limit values in compliance)		
Safe working load	200 kg		
Covers and metal frame colour	light grey - RAL 7047		
Weight (without options)	45 kg	55 kg	57 kg
Guarantee	2 years		

● = Series ○ = Option



tuv-sud.com/ps-cert

Made in Germany





## Optimally equipped

The SALSA chair is the result of more than 40 years of experience and development of therapy chairs. Functional and designed to meet the requirements of patients and medical personnel, the modular SALSA is the ideal tool for daily use in many areas.

# Side tables

## DT 1 and ST 1

### Features

- Single-handed, spring supported height adjustment
- Tray with finger-hollow
- Tilttable tray with the DT 1 model
- Fixed tray with the ST 1 model
- Flat not removable tray as option with the ST 1 model
- Detachable plastic storage box
- Holder, e.g. for bags
- Strong metal frame construction with rounded edges for easy cleaning and with caps to prevent damage



**Side table DT 1**  
with tiltable  
removable tray.



**Side table ST 1**  
with removable tray.



**Side table ST 1**  
with flat tray.

# Universal stool

## HKL 1 and HVS 1

### Features

- Base with easy ring control
- Stepless height adjustment via gas spring
- Soft casters for hard floors
- 6 standard colours for foam seat part
- 10 additional colours for foam seat part



**Universal stool HKL 1**  
Foam seat part covered with  
imitation leather

**Universal stool HVS 1**  
Grey full foam seat part

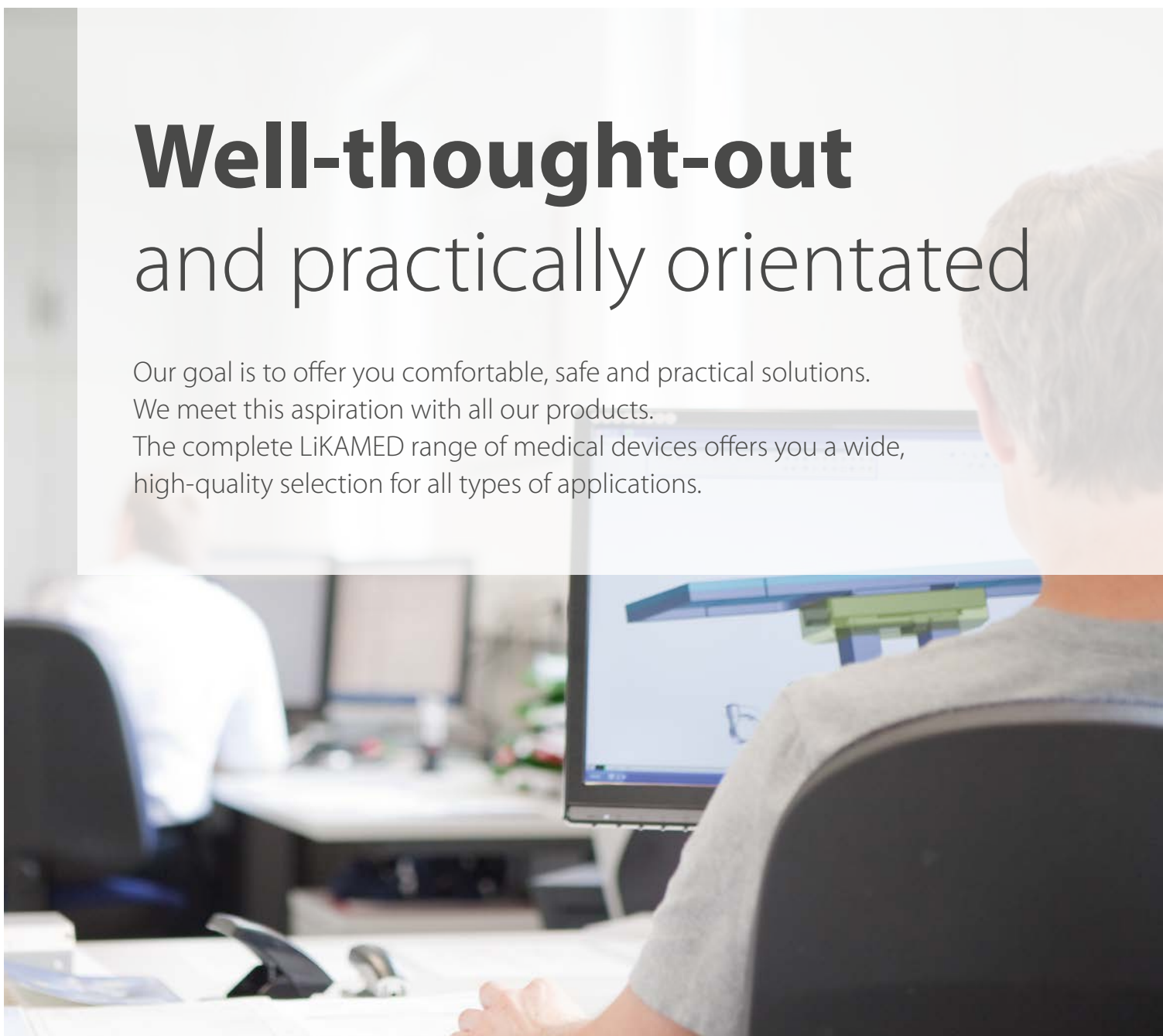
Further information and options for side tables and universal stools see [likamed.de](http://likamed.de).

# Well-thought-out and practically orientated

Our goal is to offer you comfortable, safe and practical solutions.

We meet this aspiration with all our products.

The complete LiKAMED range of medical devices offers you a wide, high-quality selection for all types of applications.







**LiKAMED®**

## Focused on design and quality

We are your specialists for high-quality, practical therapy and treatment chairs. Our consequent focusing of our product -quality, comfort and functionality based on the needs of our customers has kept LiKAMED one of the leading companies supplying innovative and high-quality medical technology for more than 40 years.

### LiKAMED is certified



- QM certification according to EN ISO 13485  
[tuv-sud.com/ps-cert](http://tuv-sud.com/ps-cert)



- Certified environmental management system according to EN ISO 14001  
[tuv-sud.com/ms-cert](http://tuv-sud.com/ms-cert)

# Made by LiKAMED

## Made in Germany



All LiKAMED products are developed, tested, produced and assembled in our house in Germany. Our long lasting experience and our strict quality check guarantee that the label "Made by LiKAMED" always stands for highest quality

### Proven LiKAMED quality

The high-quality design of the product is the result of the best possible manufacturing technology. For example, the robust and especially smooth surfaces are the product of modern LiKAMED powder coating processes with environmental management certified in accordance with ISO 14001. Or the exceptionally high finishing quality, the result of state-of-the-art precisely operating robot welding plants making the stable and seamless design reality, which also greatly simplifies cleaning and disinfection.



Our company video at [likamed.de](https://www.likamed.de)



### Product safety and quality

All of our products are subjected to user-oriented endurance tests with corresponding testing requirements. Moreover, all our medical chairs and beds are tested by the organization TÜV Product Service in accordance with the applicable standards. Our products only go into serial production once both instances have confirmed or certified their safety. We were the first company that established guidelines in collaboration with TÜV for our products to guarantee the best possible safety for our customers.



### After Sales Service - fast, dependable, long-term

The LiKAMED Service team will help you quickly and uncomplicated whenever you need it.

Our service technicians assist you with technical questions and solve your demands. Wear parts and spare parts are available for all chairs for at least ten years after the end of production. Our products should serve you for many years.



# Focused on design and quality

likamed.de

Some equipment is not available in all configurations. The information is up to date at the time of printing. LiKAMED GmbH accepts no liability for discrepancies of colour and shape from the pictures. No responsibility is accepted for errors and misprints. LiKAMED GmbH reserves the right to make changes to publications and products at any time.

Where the masculine form or the generic masculine is used in this brochure for the sake of legibility, this specifically includes the feminine and other gender identities.



**LiKAMED GmbH**

Raußmühlstraße 7 · 75031 Eppingen · Germany

Phone: +49 7262 9189-0 · E-mail: [info@likamed.de](mailto:info@likamed.de)

